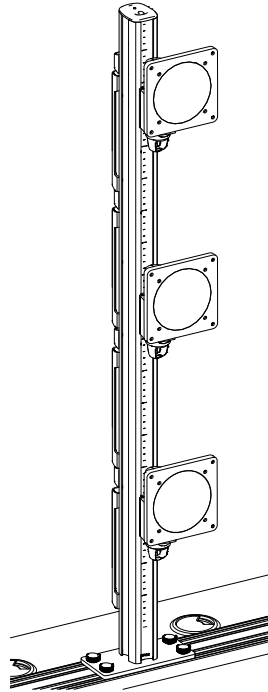
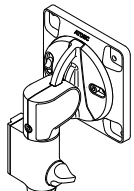


Strata Triple Fixed Head - W9213

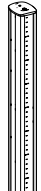
Assembly Instructions



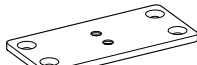
COMPONENT CHECKLIST



92410
Fixed Head
(3x)



92407
Post
(1x)



92400
Rail Plate
(1x)



Cable Cover



Cable Clip



1/4-20 WingNut
1/4-20 Thumb Screw
(4x EA.)



A



B
M8x60mm
Screw
(2x)



C
M4x10mm
Screw
(12x)



D
Security
Screw
(3x)

W9213 CONTAINS

- 1x 92407
- 3x 92410
- 1x 92400

REQUIRED TOOLS

- Phillips Head Screwdriver
- 4mm Hex Key



IMPORTANT INFORMATION

- Please ensure this product is installed as per these installation instructions.
- Do not remove/ throw away the black plastic sleeve on the channel clamp or arm links.
- The manufacturer accepts no responsibility for incorrect installation.
- This product is not suitable for outdoor use or mobile applications.
- Do not over-tighten screws and adjustment points on product.
- VESA mounted accessories (such as mini PC brackets and mounts), offset VESA locations, and unevenly weighted monitors (relative to the center of the VESA mounting interface) exert additional leverage that can exceed the capacity of the mount even though the monitor weight may be within the stated range. Please contact Atdec if you would like further information.

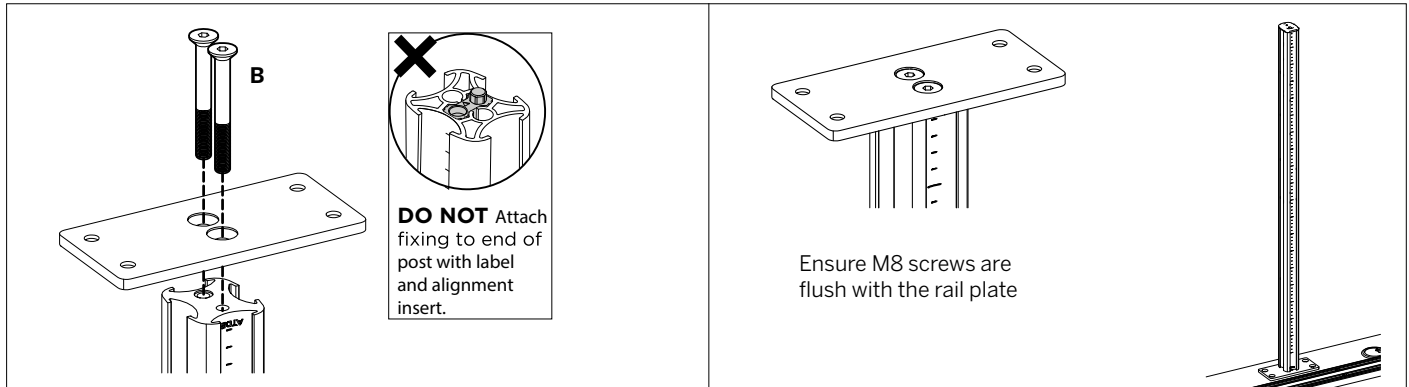
WEIGHT RANGE*

Flat display	0-12kg (26.5lbs)
Curved display	0-10kg (0-22lbs)

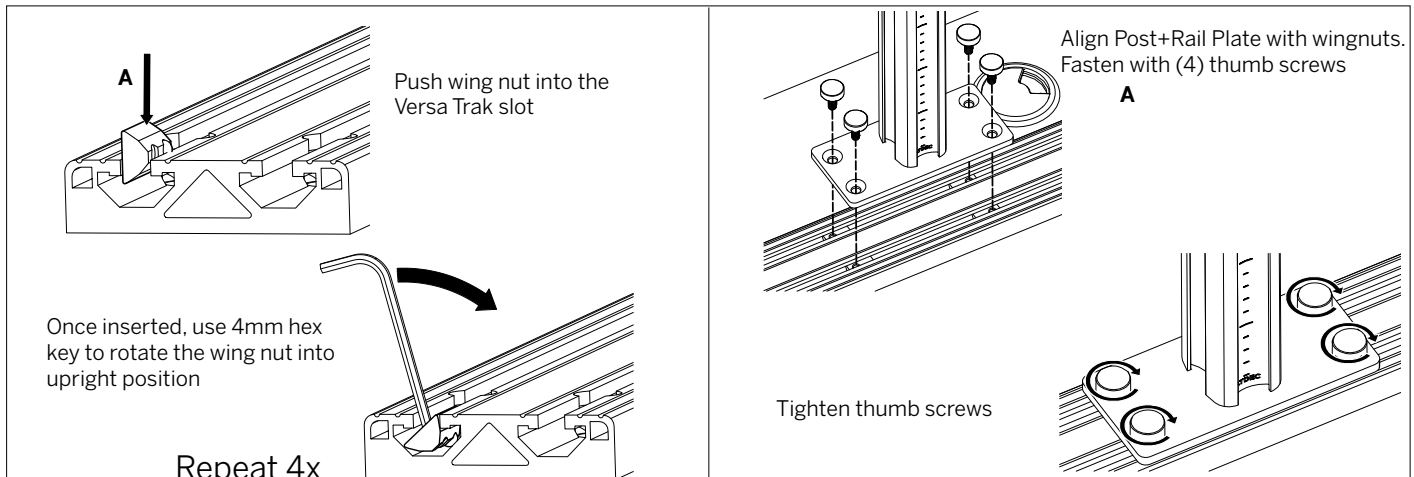
Strata Triple Fixed Head - W9213

Assembly Instructions

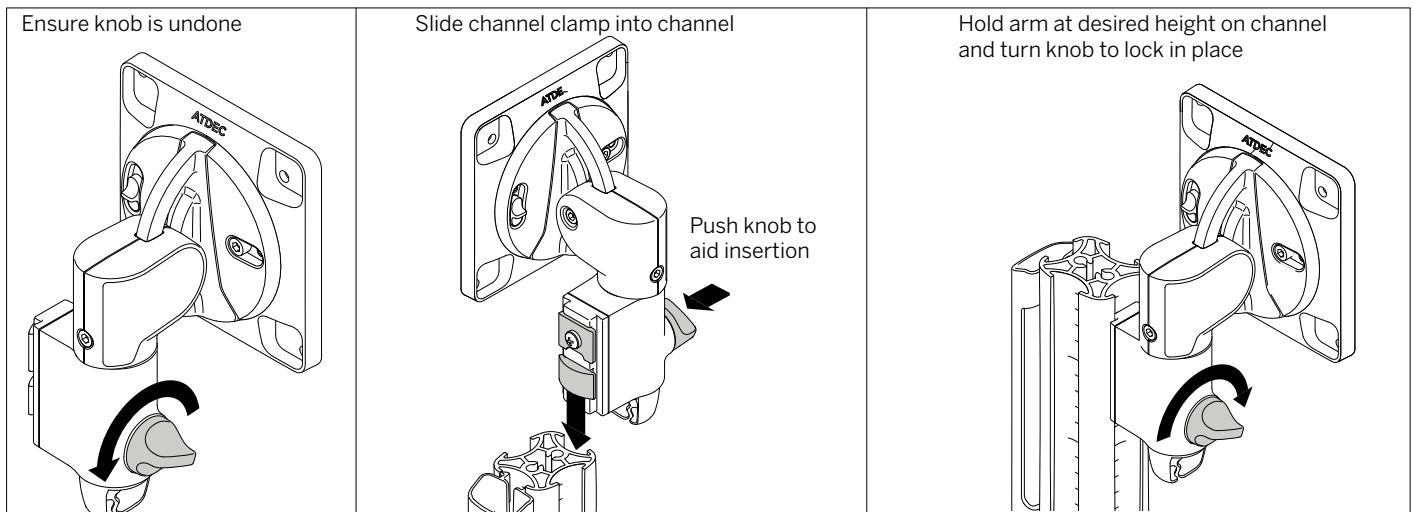
STEP 1 - ATTACH POST TO RAIL PLATE



STEP 2 - ATTACH POST TO VERSA TRACK



STEP 3 - FIX ARMS TO POST

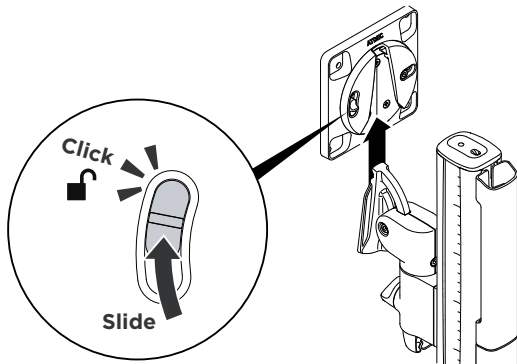


Strata Triple Fixed Head - W9213

Assembly Instructions

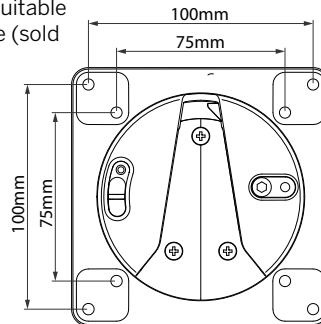
STEP 4 - ATTACH VESA HEADS TO MONITORS

Slide release switch up and click into unlocked position, then lift VESA head away from the arm.

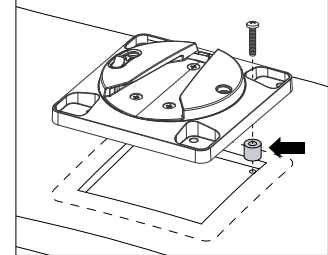


Check VESA mounting compatibility of monitor

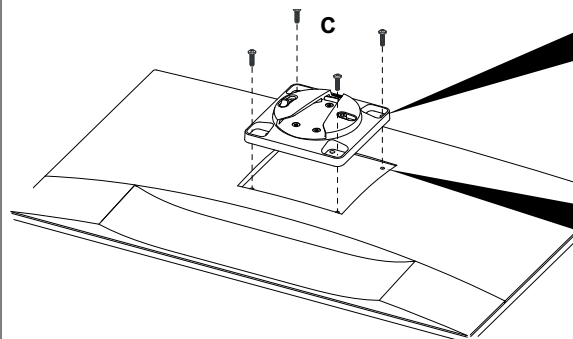
Note: For other sizes, use a suitable adaptor plate (sold separately)



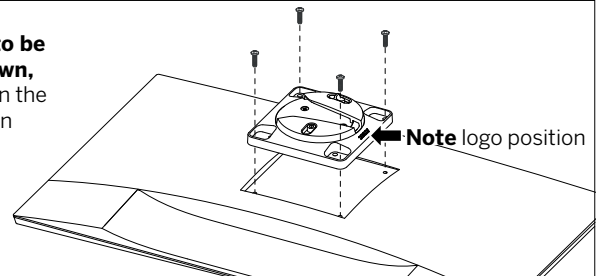
Note: Recessed 75x75 VESA interfaces will require a Spacer Kit (sold separately)



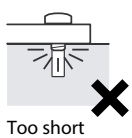
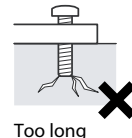
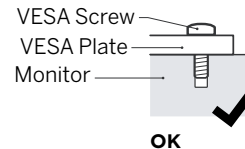
Attach VESA head onto monitor with provided screws. (Alternatively, use fasteners specified by the monitor manufacturer)



TIP
To allow monitor to be rotated upside down, mount VESA head in the alternate orientation shown.

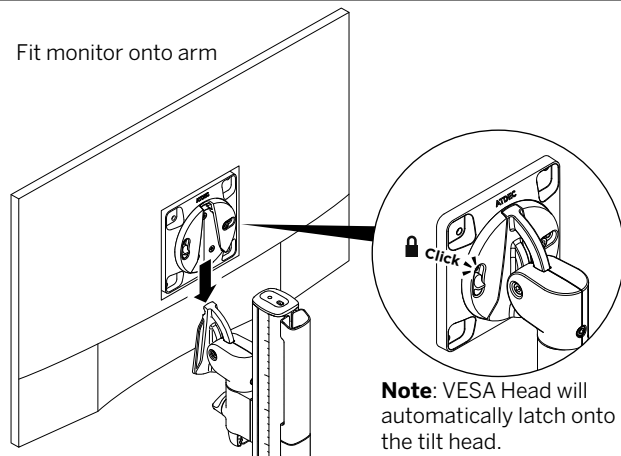


Note: Ensure screw length suits the monitor VESA mounting holes



STEP 5 - ATTACH MONITORS TO ARMS

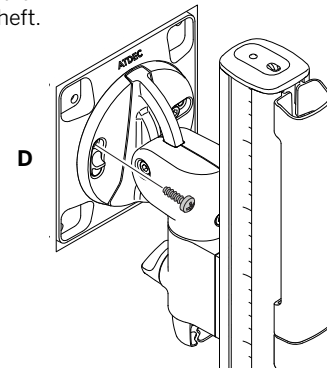
Fit monitor onto arm



Note: VESA Head will automatically latch onto the tilt head.

OPTIONAL SECURITY SCREW

If desired, once monitor is attached to the arm, install the security screw. This disables the release switch, preventing theft.

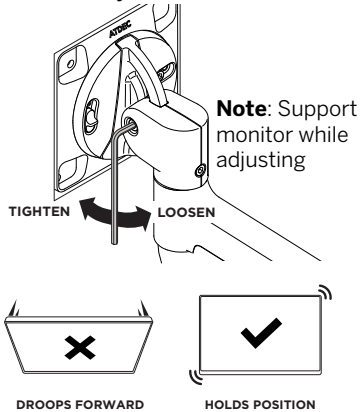


Strata Triple Fixed Head - W9213

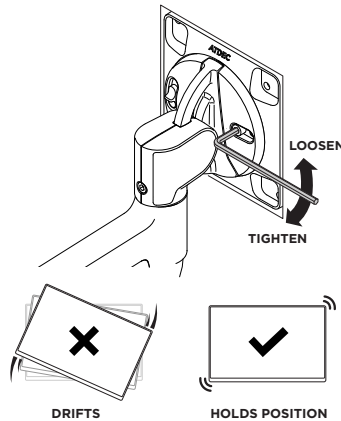
Assembly Instructions

STEP 6 - FINE ADJUSTMENTS

Factory set tilt tension will be suitable for most monitors.
If required, adjust the tilt tension using the 4mm hex key

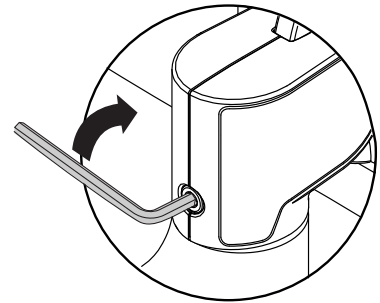


Tune the rotation tension using 4mm hex key.
Adjustment may only be required for ultrawide monitors.



ARM JOINT TENSION

Arm movement can be adjusted to be firmer or more free. Use the 4mm hex key to adjust the tension of the pivot joints on the arm



DO NOT OVERTIGHTEN

Increasing the tension only stiffens movement and cannot lock off arm movement.

STEP 7 - CABLE MANAGEMENT

