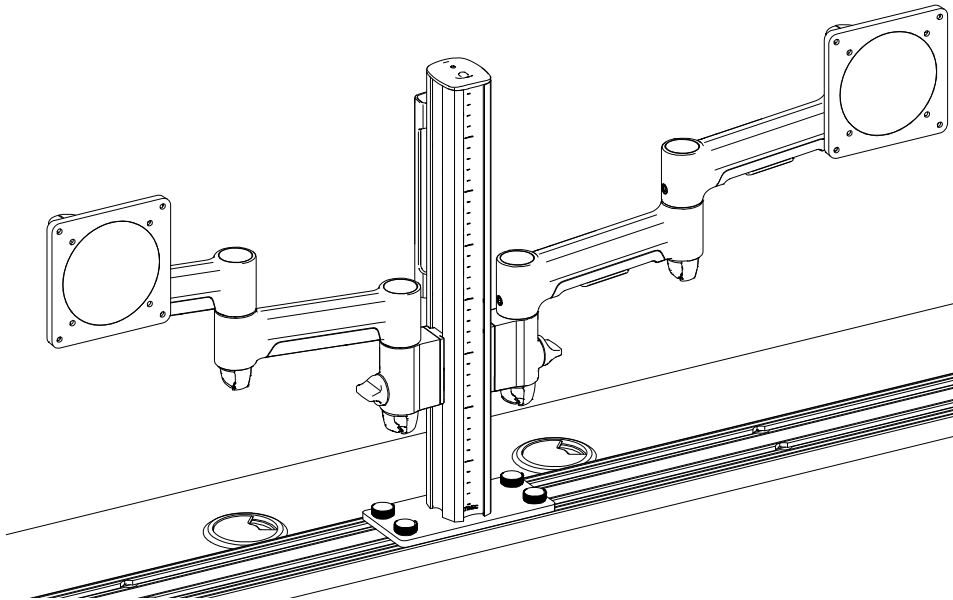
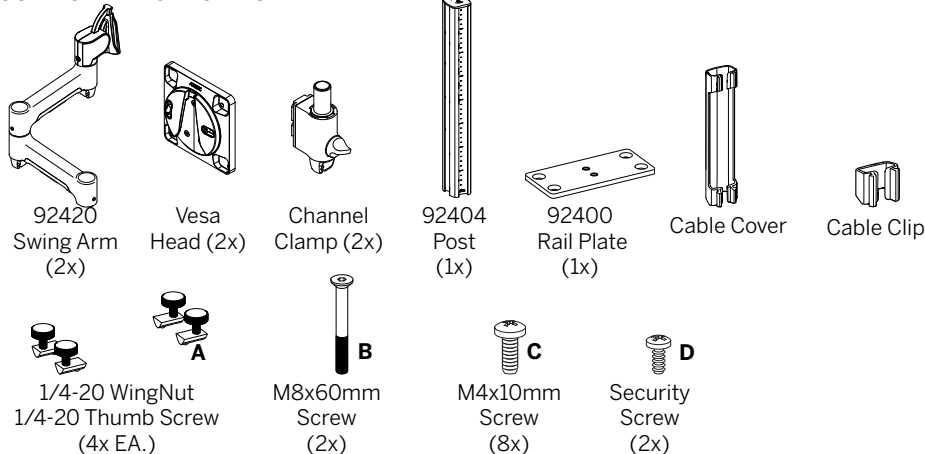


# Strata Dual Swing Arms - W9222

## Assembly Instructions



### COMPONENT CHECKLIST



### W9222 CONTAINS

- 1x 92404
- 2x 92420
- 1x 92400

### REQUIRED TOOLS

- Phillips Head Screwdriver
- 4mm Hex Key

### IMPORTANT INFORMATION

- Please ensure this product is installed as per these installation instructions.
- Do not remove/ throw away the black plastic sleeve on the channel clamp or arm links.
- The manufacturer accepts no responsibility for incorrect installation.
- This product is not suitable for outdoor use or mobile applications.
- Do not over-tighten screws and adjustment points on product.
- VESA mounted accessories (such as mini PC brackets and mounts), offset VESA locations, and unevenly weighted monitors (relative to the center of the VESA mounting interface) exert additional leverage that can exceed the capacity of the mount even though the monitor weight may be within the stated range. Please contact Atdec if you would like further information.

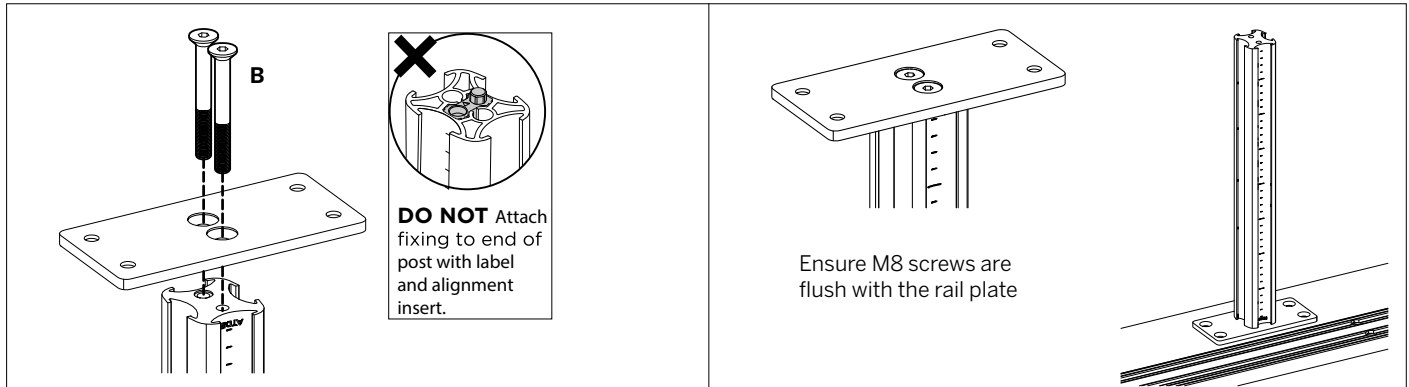
### WEIGHT RANGE\*

Flat display	0-12kg (26.5lbs)
Curved display	0-10kg (0-22lbs)

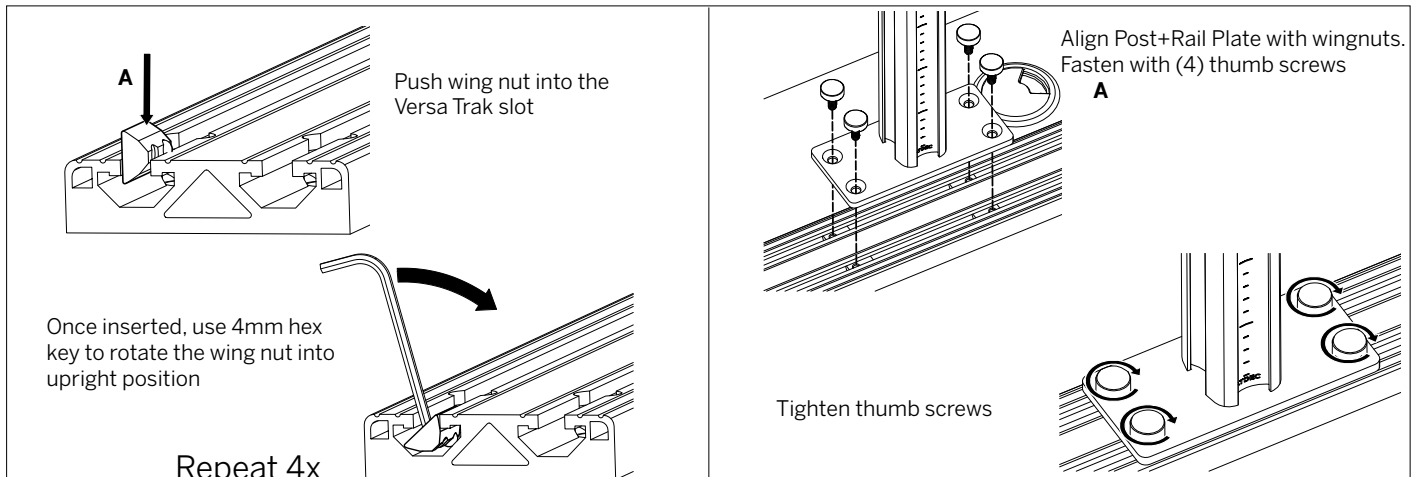
# Strata Dual Swing Arms - W9222

## Assembly Instructions

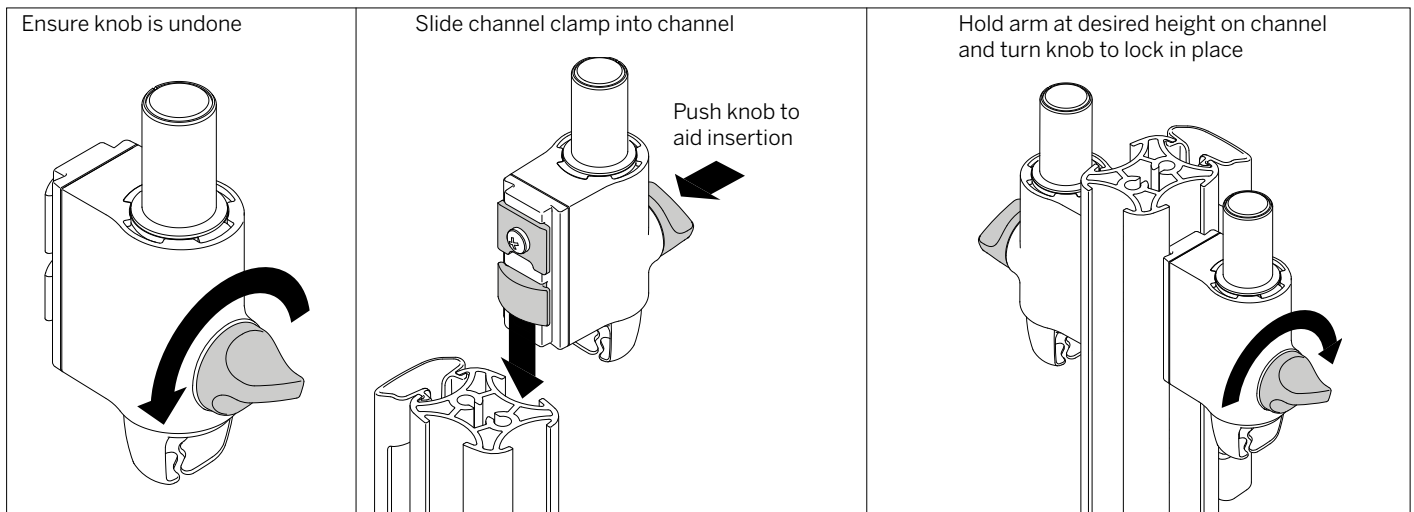
### STEP 1 - ATTACH POST TO RAIL PLATE



### STEP 2 - ATTACH POST TO VERSA TRACK



### STEP 3 - FIX ARMS TO POST

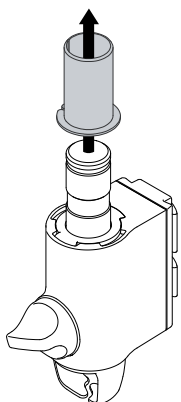
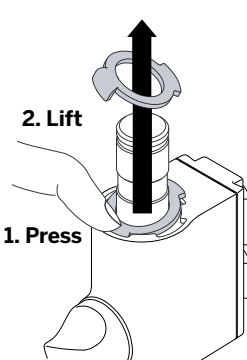
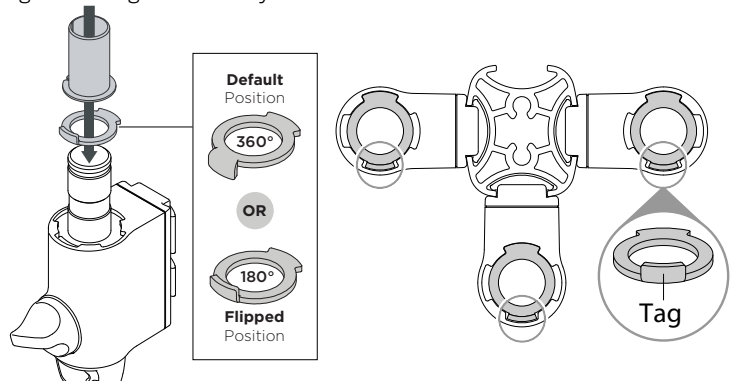
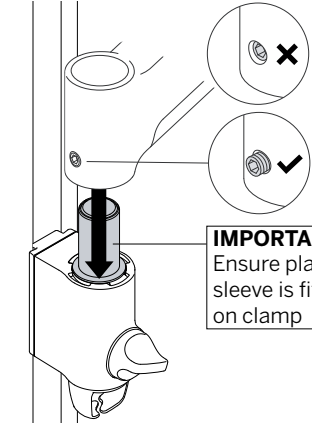
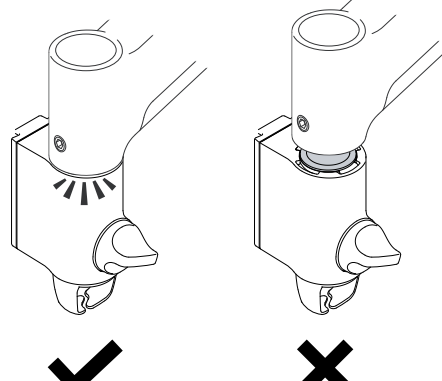
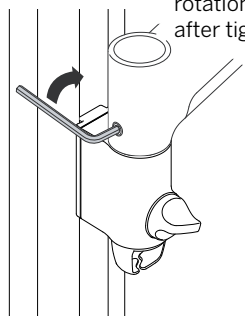


# Strata Dual Swing Arms - W9222

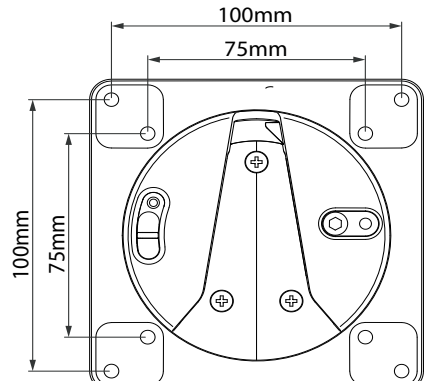
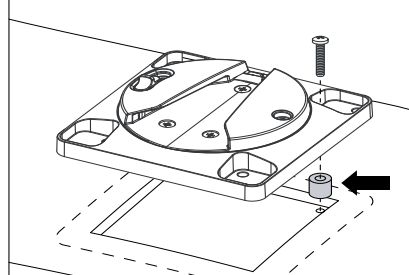
## Assembly Instructions

(OPTIONAL) - SET ARM ROTATION TO 180°

### STEP 4 - FIT ARMS ONTO CHANNEL CLAMP

<p>Remove plastic sleeve from channel clamp.</p> 	<p>Remove rotation ring</p> <p>2. Lift</p> <p>1. Press</p> 	<p>Place rotation ring in desired position and <b>return</b> plastic sleeve</p> <p><b>NOTE:</b> Rotation ring placement depends on the position of the clamp on the post. The tag on the ring should always face towards the user.</p> 
<p>Push arm onto shaft</p>  <p><b>IMPORTANT</b> Ensure plastic sleeve is fitted on clamp</p>	<p>Ensure arm is fully pushed onto shaft</p> 	<p>Tighten joint screw</p> <p><b>Note:</b> Check the arm rotation is smooth after tightening</p> 

### STEP 5 - ATTACH VESA HEADS TO MONITORS

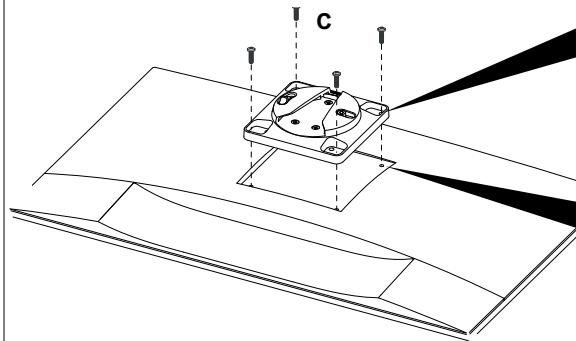
<p>Check VESA mounting compatibility of monitor</p> <p><b>Note:</b> For other sizes, use a suitable adaptor plate (sold separately)</p> 	<p><b>Note:</b> Recessed 75x75 VESA interfaces will require a Spacer Kit (sold separately)</p> 
---	---

# Strata Dual Swing Arms - W9222

## Assembly Instructions

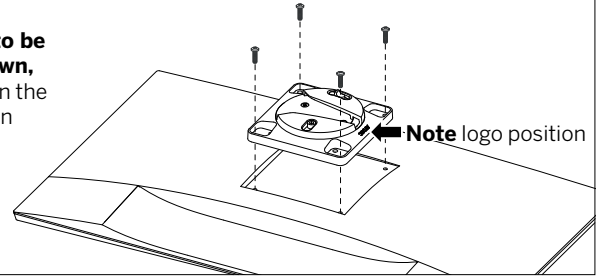
### STEP 5 - ATTACH VESA HEADS TO MONITORS (CONTINUED)

Attach VESA head onto monitor with provided screws. (Alternatively, use fasteners specified by the monitor manufacturer)



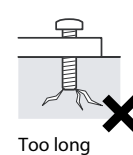
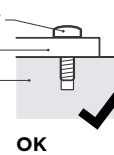
#### TIP

To allow monitor to be rotated upside down, mount VESA head in the alternate orientation shown.



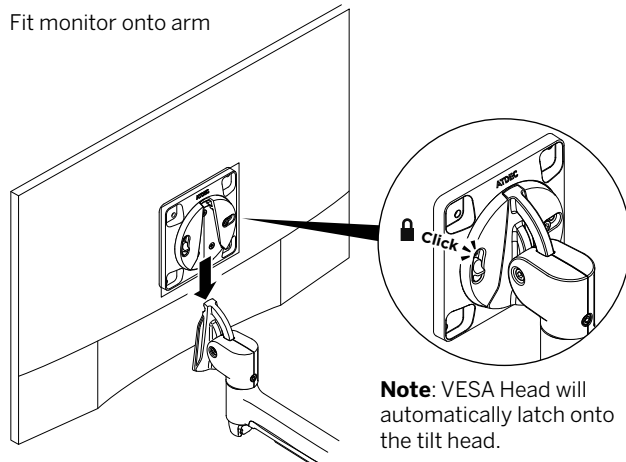
**Note:** Ensure screw length suits the monitor VESA mounting holes

VESA Screw  
VESA Plate  
Monitor



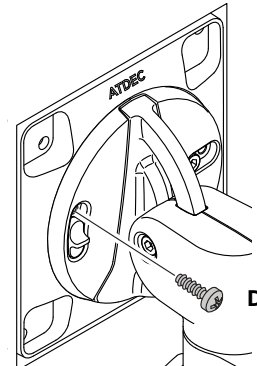
### STEP 6 - ATTACH MONITORS TO ARMS

Fit monitor onto arm



#### OPTIONAL SECURITY SCREW

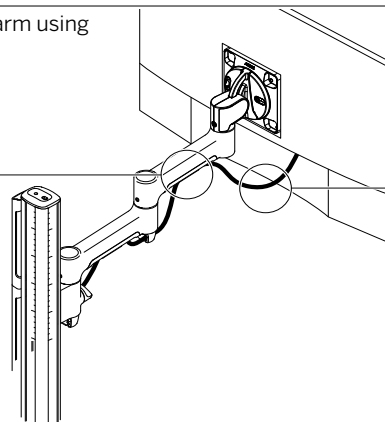
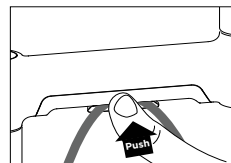
If desired, once monitor is attached to the arm, install the security screw. This disables the release switch, preventing theft.



### STEP 7 - MONITOR ARM CABLE MANAGEMENT

Plug cables into the monitor and route the cables down the arm using the cable hooks and clips

Push cables into hook flaps



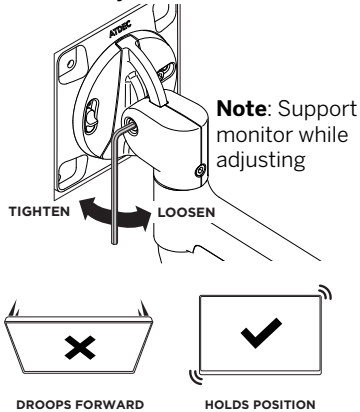
Ensure enough cable slack is given to allow for movement of the monitor

# Strata Dual Swing Arms - W9222

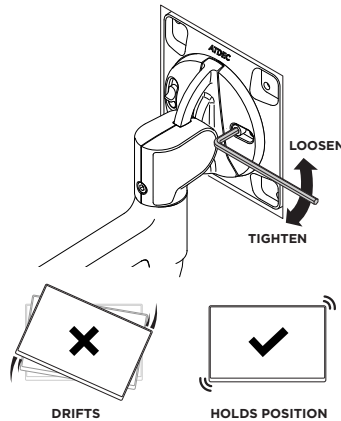
## Assembly Instructions

### STEP 8 - FINE ADJUSTMENTS

Factory set tilt tension will be suitable for most monitors.  
If required, adjust the tilt tension using the 4mm hex key

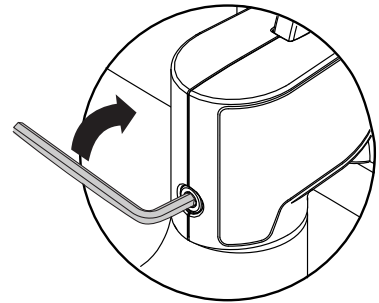


Tune the rotation tension using 4mm hex key.  
Adjustment may only be required for ultrawide monitors.



#### ARM JOINT TENSION

Arm movement can be adjusted to be firmer or more free. Use the 4mm hex key to adjust the tension of the pivot joints on the arm



#### DO NOT OVERTIGHTEN

Increasing the tension only stiffens movement and cannot lock off arm movement.

### STEP 9 - CABLE MANAGEMENT

